

Art Knowledge Organiser - Year 3

Landscapes

What is Landscape art?

Landscape art refers to artwork which has a primary focus of **natural scenery**. It depicts images such as hills, mountains, rivers, meadows, lakes, forests, beaches and deserts.

Art Techniques

We use watercolour paints to practise and develop the following skills:

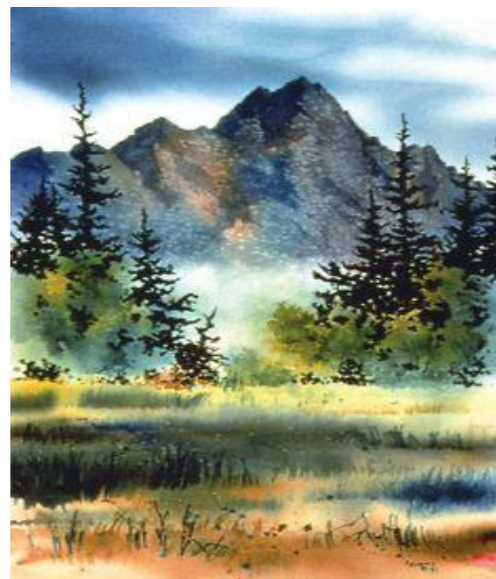
- **Mixing** colours to create a desired **tone**
- Creating a background using a **wash**
- Using a **range of brushes** to create different effects

Key Vocabulary

landscape	dark
artist	mix
technique	tone
colour	line
light	shape
bright	shade

Artist Work

Through this unit we will be **studying** and **comparing** work by artists **Joseph Mallord William Turner**, an English painter known for his use of watercolour and **Nicola Bayley**, a famous artist and illustrator, known for her beautiful artwork in '*The Mousehole Cat*'. We will be identifying the techniques which each artist has used and comparing their pieces.



Useful Links

Introduction to colour

<https://www.bbc.co.uk/bitesize/guides/z3bqycw/video>

Creating a watercolour wash

<https://www.youtube.com/watch?v=gowAHiV4jPo>

Joseph Mallord William Turner

<https://www.tate.org.uk/art/artists/joseph-mallord-william-turner-558>

Nicola Bayley

<https://www.walker.co.uk/contributors/Nicola-Bayley-1674.aspx>